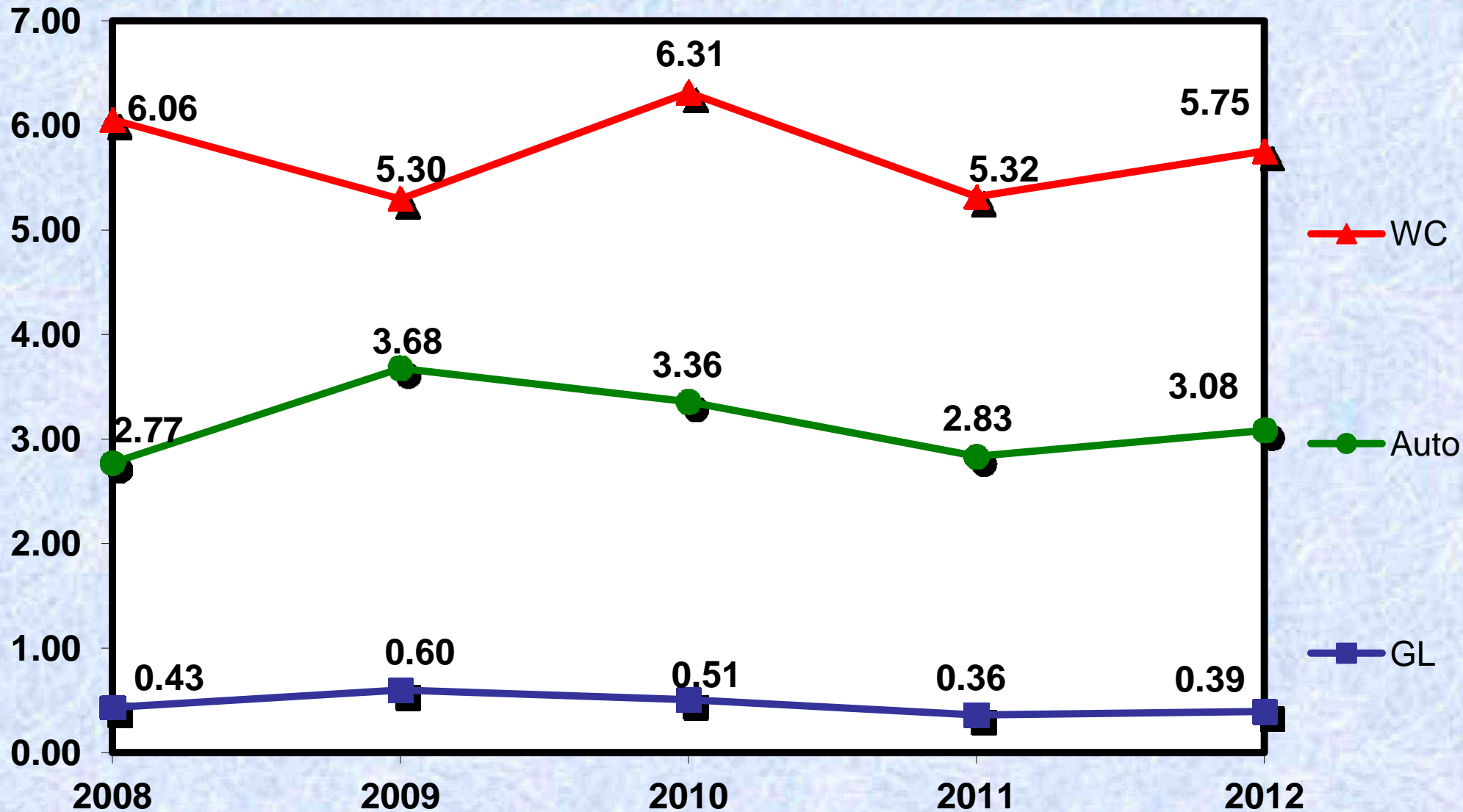


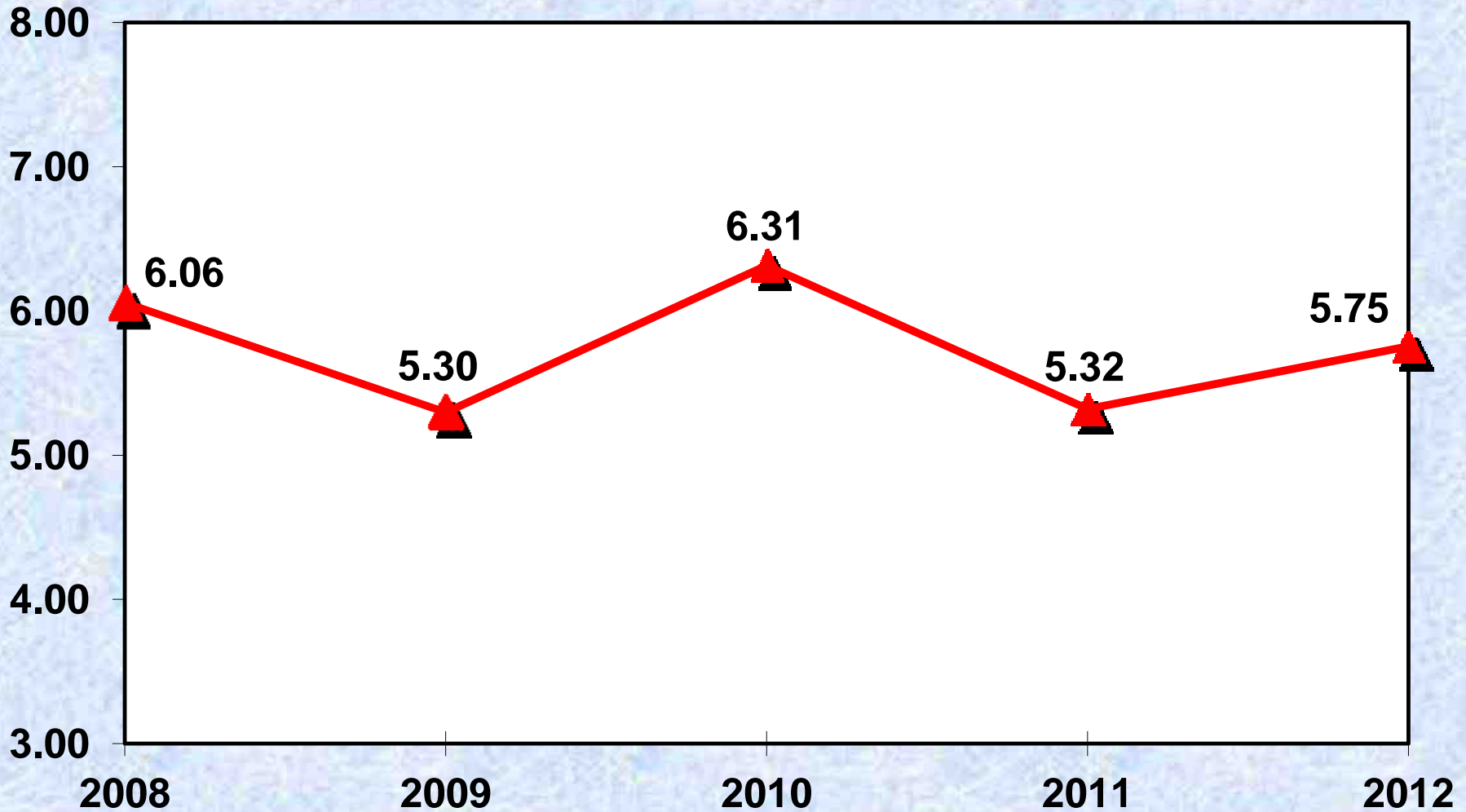


PestSure Association 2012 First Quarter Occurrence Ratio History





PestSure Association Workers' Compensation 2012 - First Quarter Occurrence Ratio History



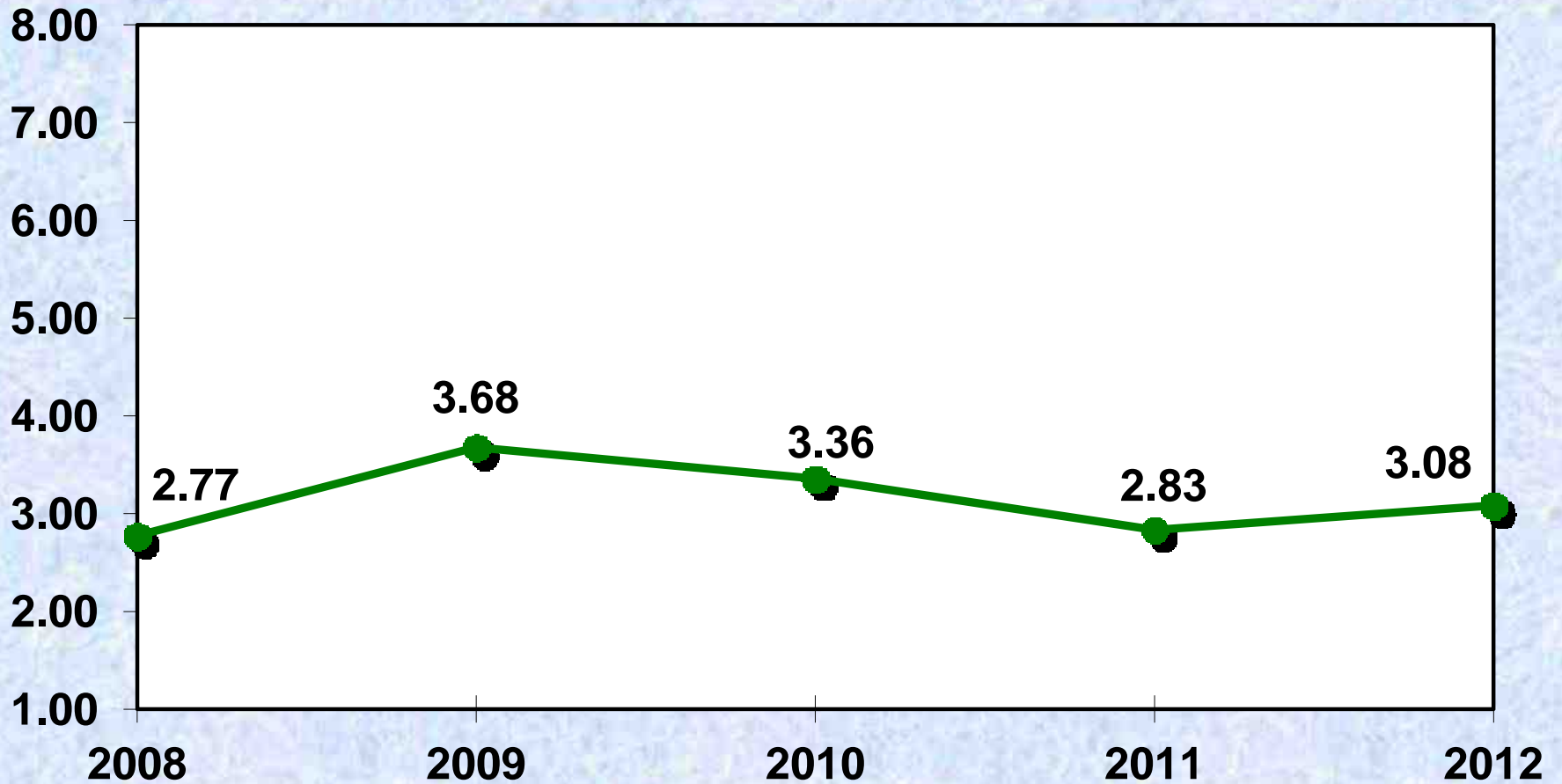


**PESTSURE ASSOCIATION WORKERS' COMPENSATION
2012 - FIRST QUARTER OCCURRENCE RATIO HISTORY**

INSURED	2008			2009			2010			2011			2012		
	As of 03/31/2008			As of 03/31/2009			As of 03/31/2010			As of 03/31/2011			As of 03/31/2012		
	total emp.	occ.	occ. ratio	total emp.	occ.	occ. ratio	total emp.	occ.	occ. ratio	total emp.	occ.	occ. ratio	total emp.	occ.	occ. ratio
A-ACTIVE	38	0	0.00	38	0	0.00	40	1	10.00	32	0	0.00	39	0	0.00
ABC PEST CONTROL - DFW	94	0	0.00	95	0	0.00	95	1	4.21	103	0	0.00	103	0	0.00
ACME EXTERMINATING CORP	18	0	0.00	18	0	0.00	18	0	0.00	17	0	0.00	17	0	0.00
AL HOFFER'S PEST PROTECTION, INC.	30	0	0.00	26	0	0.00	22	0	0.00	22	0	0.00	22	0	0.00
ANTI-PEST CO INC	33	1	12.12	28	1	14.29	26	0	0.00	25	0	0.00	26	0	0.00
BUG BUSTERS INC	59	0	0.00	41	0	0.00	41	0	0.00	43	1	9.30	44	0	0.00
COOPER PEST SOLUTIONS				67	0	0.00	72	1	5.56	79	0	0.00	89	0	0.00
ECOLA SERVICES, INC.													51	0	0.00
EVINS PEST CONTROL	16	0	0.00	15	0	0.00	14	0	0.00	14	0	0.00	14	0	0.00
FORSHAW, INC.													48	0	0.00
MODERN EXTERMINATING (SC)	40	5	50.00	43	2	18.60	40	2	20.00	37	0	0.00	37	0	0.00
OLSON dbaTHE BUGMAN	35	1	11.43	37	0	0.00	43	1	9.30	41	0	0.00	55	0	0.00
PEST CONTROL TECHNICIANS	20	0	0.00	16	0	0.00	17	0	0.00	17	0	0.00	16	0	0.00
PEST FOG	33	0	0.00	30	0	0.00	30	0	0.00	34	0	0.00	36	0	0.00
PESTMASTERS	25	0	0.00	22	0	0.00	21	0	0.00	23	0	0.00	23	0	0.00
RESIDEX	68	0	0.00	66	0	0.00	65	0	0.00	65	0	0.00	120	0	0.00
ROTTLER PEST & LAWN	105	0	0.00	105	0	0.00	99	0	0.00	100	0	0.00	100	0	0.00
SPRINGER SERVICES	40	0	0.00	38	0	0.00	36	0	0.00	42	0	0.00	42	0	0.00
STANDARD EXTERMINATING	21	0	0.00	20	0	0.00	20	0	0.00	20	0	0.00	23	0	0.00
STEVE'S PEST CONTROL	13	0	0.00	17	0	0.00	20	0	0.00	20	0	0.00	20	0	0.00
TERMIMESH, LLC	16	0	0.00	28	1	14.29	28	0	0.00	20	0	0.00	20	0	0.00
VENTURA PEST CONTROL	38	0	0.00	33	1	12.12	33	1	12.12	30	0	0.00	28	0	0.00
VIKING TERMITE & PEST CONTROL, INC.							2	1	200.00	1	0	0.00	1	0	0.00
W.B. SPRAGUE	57	0	0.00	55	1	7.27	57	0	0.00	61	2	13.11	80	0	0.00
LLOYD PEST CONTROL	261	3	4.60	269	5	7.43	250	7	11.20	250	6	9.60	265	1	1.51
BIO-SERV CORP	200	1	2.00	199	1	2.01	186	3	6.45	114	3	10.53	197	1	2.03
W.B. MCCLOUD	194	5	10.31	179	2	4.47	160	3	7.50	165	1	2.42	188	1	2.13
DODSON BROS.	525	5	3.81	527	8	6.07	520	9	6.92	524	1	0.76	511	4	3.13
AMERICAN PEST MANAGEMENT	70	1	5.71	78	0	0.00	76	2	10.53	98	1	4.08	118	1	3.39
DEWEY SERVICES, INC.	534	1	0.75	534	4	3.00	527	2	1.52	512	5	3.91	529	5	3.78
ANDERSON PEST	174	5	11.49	171	3	7.02	190	3	6.32	194	1	2.06	208	2	3.85
ABC PEST CONTROL - HOUSTON	157	2	5.10	164	2	4.88	164	0	0.00	164	2	4.88	200	2	4.00
GRIFFIN PEST CONTROL	67	0	0.00	67	0	0.00	85	1	4.71	68	3	17.65	89	1	4.49
COPELAN SERVICES, INC.	256	6	9.38	251	1	1.59	247	5	8.10	243	3	4.94	263	3	4.56
MYERS SERVICES	90	1	4.44	91	1	4.40	89	2	8.99	88	1	4.55	81	1	4.94
APEX PEST CONTROL	84	2	9.52	60	0	0.00	59	1	6.78	60	1	6.67	70	1	5.71
PestSure 2012 YTD Average	5.75														
GUARDIAN PEST													67	1	5.97
SMITHEREEN	113	1	3.54	120	1	3.33	121	1	3.31	121	0	0.00	117	2	6.84
COOK'S PEST CONTROL	1210	27	8.93	1291	22	6.82	1322	27	8.17	1351	20	5.92	1377	24	6.97
CLEGG'S TERMITE & Pest Control													276	5	7.25
BILL CLARK PEST CONTROL	50	3	24.00	51	0	0.00	53	1	7.55	54	2	14.81	54	1	7.41
MASSEY SERVICES	762	17	8.92	776	11	5.67	770	7	3.64	1014	19	7.50	1289	25	7.76
ARROW EXTERMINATORS	945	19	8.04	1000	28	11.20	950	18	7.58	979	16	6.54	954	19	7.97
SPENCER PEST CONTROL				62	0	0.00	47	2	17.02	50	0	0.00	50	1	8.00
BRUCE TERMINIX	200	1	2.00	213	0	0.00	204	5	9.80	200	5	10.00	199	4	8.04
McNEELY PEST CONTROL							34	2	23.53	34	0	0.00	47	1	8.51
ABC PEST CONTROL - AUSTIN	359	5	5.57	373	5	5.36	375	8	8.53	424	5	4.72	462	12	10.39
REDD-GULFPORT	34	1	11.76	32	1	12.50	34	0	0.00	37	1	10.81	38	1	10.53
LOYAL TERMITE & PEST	31	0	0.00	32	0	0.00	32	0	0.00	33	0	0.00	36	1	11.11
CHEMTEC PEST CONTROL	22	0	0.00	22	0	0.00	22	0	0.00	26	0	0.00	27	1	14.81
ANTI-PESTO BUG KILLERS	14	0	0.00	12	0	0.00	12	1	33.33	12	0	0.00	12	1	33.33
BLISS PEST PROTECTION	65	1	6.15	48	0	0.00	55	1	7.27	51	0	0.00	50	5	40.00
MODERN PEST SERVICES (ME)	127	0	0.00	127	1	3.15	130	2	6.15	150	5	13.33			
PERMA TREAT PEST	97	0	0.00	107	1	3.74	102	1	3.92	110	3	10.91			
YOUR WAY FUMIGATION	90	0	0.00	85	0	0.00	73	0	0.00	74	0	0.00			
TOTALS	7530	114		7779	103		7728	122		8046	107		8828	127	
AVERAGES	6.06			5.30			6.31			5.32			5.75		



PestSure Association Auto Liability 2012 - First Quarter Occurrence Ratio History





**PESTSURE ASSOCIATION AUTO LIABILITY
2012 - FIRST QUARTER OCCURRENCE RATIO HISTORY**

INSURED	2008			2009			2010			2011			2012		
	As of 03/31/2008			As of 03/31/2009			As of 03/31/2010			As of 03/31/2011			As of 03/31/12		
	total veh.	occ.	occ. ratio	total veh.	occ.	occ. ratio	total veh.	occ.	occ. ratio	total veh.	occ.	occ. ratio	total veh.	occ.	occ. ratio
A-ACTIVE	29	1	13.79	29	0	0.00	26	0	0.00	24	0	0.00	26	0	0.00
ABC PEST CONTROL - DFW	77	1	5.19	90	1	4.44	90	0	0.00	91	0	0.00	91	0	0.00
ACME EXTERMINATING CORP.										1	0	0.00	1	0	0.00
AL HOFFER'S	28	0	0.00	26	0	0.00	23	0	0.00	22	0	0.00	22	0	0.00
ALAMAR COMPANY	223	1	1.79	232	0	0.00	232	0	0.00	237	1	1.69	238	0	0.00
ANTI-PEST CO INC	32	2	25.00	32	1	12.50	30	0	0.00	30	0	0.00	23	0	0.00
ANTI-PESTO BUG KILLERS	13	0	0.00	12	0	0.00	12	1	33.33	12	0	0.00	13	0	0.00
BIO-SERV CORP	239	1	1.67	238	0	0.00	230	0	0.00	242	0	0.00	257	0	0.00
BLACK PEST CONTROL	36	0	0.00	38	0	0.00	35	0	0.00	38	0	0.00	35	0	0.00
BUG BUSTERS	62	1	6.45	50	0	0.00	49	0	0.00	44	0	0.00	41	0	0.00
BUG OUT SERVICE										109	1	3.67	102	0	0.00
COOPER PEST CONTROL	48	0	0.00	51	0	0.00	51	0	0.00	57	0	0.00	64	0	0.00
ECOLA SERVICES	41	0	0.00	41	1	9.76	42	0	0.00	47	1	8.51	48	0	0.00
EVINS PEST CONTROL	13	0	0.00	14	1	28.57	14	0	0.00	15	0	0.00	8	0	0.00
FORSHAW, INC.													18	0	0.00
GREGORY TERMITE & PEST	109	1	3.67	121	2	6.61	121	3	9.92	130	2	6.15	138	0	0.00
GRIFFIN PEST CONTROL	52	0	0.00	57	0	0.00	63	1	6.35	58	0	0.00	67	0	0.00
McCALL SERVICE	105	0	0.00	109	1	3.67	90	0	0.00	96	0	0.00	92	0	0.00
MCNEELY PEST CONTROL, INC.	21	0	0.00	26	0	0.00	26	0	0.00	29	1	13.79	37	0	0.00
MODERN EXTERMINATING (SC)	33	0	0.00	34	0	0.00	33	0	0.00	31	1	12.90	31	0	0.00
	38	0	0.00	39	0	0.00	36	0	0.00	34	0	0.00	33	0	0.00
NEW ENGLAND PEST CONTROL	68	1	5.88	67	0	0.00	66	0	0.00	60	0	0.00	65	0	0.00
NOZZLE NOLEN INC	91	0	0.00	90	0	0.00	81	0	0.00	80	0	0.00	84	0	0.00
OLSON DBA THE BUGMAN	32	0	0.00	31	0	0.00	31	1	12.90	33	0	0.00	40	0	0.00
PARAMOUNT PEST CONTROL	11	0	0.00	8	0	0.00	8	0	0.00	11	0	0.00	13	0	0.00
PEST CONTROL TECHNICIANS	11	1	36.36	11	0	0.00	11	0	0.00	10	0	0.00	10	0	0.00
PESTGUARD FUMIGATING	34	0	0.00	18	0	0.00	17	1	23.53	22	0	0.00	18	0	0.00
RESIDEX	33	0	0.00	32	0	0.00	31	0	0.00	33	0	0.00	52	0	0.00
ROTTLER PEST & LAWN	89	0	0.00	86	0	0.00	82	0	0.00	93	0	0.00	95	0	0.00
SMITHEREEN EXTERMINATING CO	82	0	0.00	100	2	8.00	100	1	4.00	102	1	3.92	101	0	0.00
STANDARD EXTERMINATING	5	0	0.00	5	0	0.00	6	1	66.67	7	0	0.00	8	0	0.00
STEVE'S PEST CONTROL	12	0	0.00	15	0	0.00	17	0	0.00	18	1	22.22	18	0	0.00
TERMIMESH, LLC	10	0	0.00	25	0	0.00	26	2	30.77	19	0	0.00	19	0	0.00
VENTURA PEST CONTROL	34	0	0.00	33	0	0.00	31	0	0.00	31	0	0.00	30	0	0.00
W.B. SPRAGUE	123	1	3.25	127	0	0.00	129	0	0.00	134	1	2.99	152	0	0.00
YOUR WAY FUMIGATION	53	0	0.00	57	0	0.00	56	0	0.00	53	0	0.00	53	0	0.00
DEWEY SERVICES, INC.	616	1	0.65	590	3	2.03	535	1	0.75	482	2	1.66	503	1	0.80
TERMINIX SERVICES	984	9	3.66	1040	9	3.46	1078	7	2.60	1083	6	2.22	1083	5	1.85
DODSON BROS.	612	3	1.96	629	5	3.18	621	4	2.58	616	0	0.00	628	3	1.91
ANDERSON PEST SOLUTIONS	175	1	2.29	185	2	4.32	178	2	4.49	181	2	4.42	198	1	2.02
BRUCE TERMINIX	181	2	4.42	193	5	10.36	190	0	0.00	187	0	0.00	187	1	2.14
PestSure 2012 YTD Average															3.08
COOK'S PEST CONTROL	1202	8	2.66	1276	12	3.76	1330	14	4.21	1317	15	4.56	1326	12	3.62
COPELAN SERVICES, INC.	194	1	2.06	190	4	8.42	195	2	4.10	190	1	2.11	199	2	4.02
ARROW EXTERMINATORS				750	13	6.93	796	15	7.54	822	10	4.87	789	8	4.06
ABC PEST CONTROL - AUSTIN	270	2	2.96	297	3	4.04	308	0	0.00	348	1	1.15	348	4	4.60
W.B. MCCLOUD	175	1	2.29	171	1	2.34	166	0	0.00	174	1	2.30	163	2	4.91
ROSE PEST SOLUTIONS				71	1	5.63	69	1	5.80	72	1	5.56	79	1	5.06
LLOYD PEST CONTROL	252	3	4.76	227	3	5.29	227	3	5.29	245	2	3.27	235	3	5.11

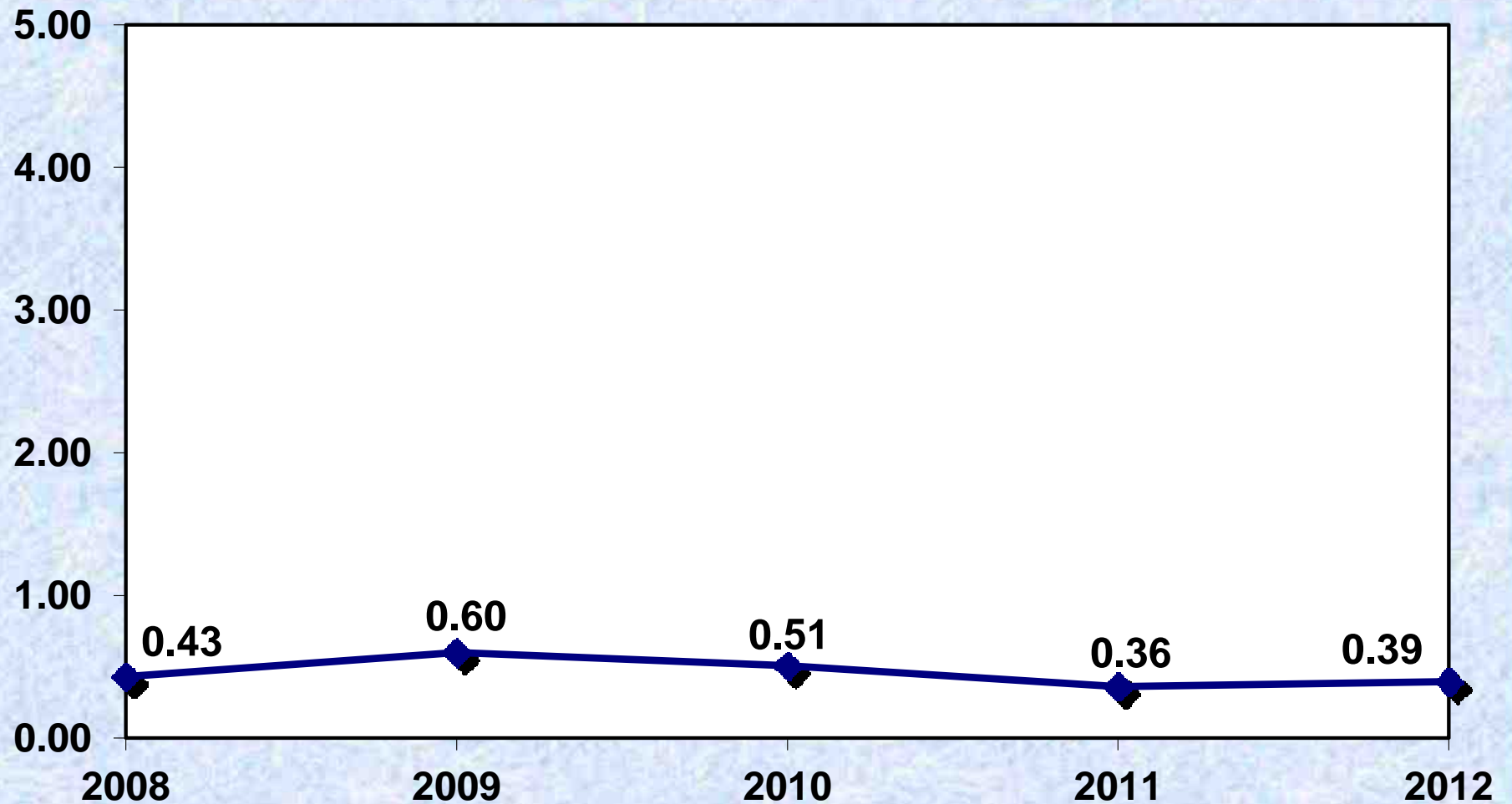


**PESTSURE ASSOCIATION AUTO LIABILITY
2012 - FIRST QUARTER OCCURRENCE RATIO HISTORY**

INSURED	2008 As of 03/31/2008			2009 As of 03/31/2009			2010 As of 03/31/2010			2011 As of 03/31/2011			2012 As of 03/31/12		
	<u>total</u> <u>veh.</u>	<u>occ.</u>	<u>occ.</u> <u>ratio</u>	<u>total</u> <u>veh.</u>	<u>occ.</u>	<u>occ.</u> <u>ratio</u>	<u>total</u> <u>veh.</u>	<u>occ.</u>	<u>occ.</u> <u>ratio</u>	<u>total</u> <u>veh.</u>	<u>occ.</u>	<u>occ.</u> <u>ratio</u>	<u>total</u> <u>veh.</u>	<u>occ.</u>	<u>occ.</u> <u>ratio</u>
MASSEY SERVICES	619	5	3.23	676	8	4.73	678	14	8.26	1067	9	3.37	1040	14	5.38
MYERS SERVICES	68	2	11.76	69	0	0.00	71	0	0.00	71	1	5.63	71	1	5.63
APEX PEST CONTROL	60	0	0.00	57	1	7.02	54	1	7.41	55	0	0.00	68	1	5.88
BILL CLARK PEST CONTROL INC	49	0	0.00	49	0	0.00	50	0	0.00	52	0	0.00	55	1	7.27
ABC PEST CONTROL - HOUSTON	116	4	13.79	144	3	8.33	144	0	0.00	142	2	5.63	142	3	8.45
HULETT ENVIRONMENTAL SVCS	235	2	3.40	235	1	1.70	243	0	0.00	261	3	4.60	271	6	8.86
AMERICAN PEST										77	2	10.39	85	2	9.41
REDD-GULFPORT	43	0	0.00	39	0	0.00	37	1	10.81	43	1	9.30	41	1	9.76
TOMASELLO	30	0	0.00	30	0	0.00	31	0	0.00	28	0	0.00	28	1	14.29
PEST FOG	28	0	0.00	27	0	0.00	26	0	0.00	24	0	0.00	26	1	15.38
CHEMTEC PEST CONTROL	19	0	0.00	21	0	0.00	21	0	0.00	21	0	0.00	21	1	19.05
MODERN PEST SERVICES (ME)	119	0	0.00	118	0	0.00	113	0	0.00	125	0	0.00			
TOTALS	7934	55		9028	83		9056	76		9736	69		9729	75	
AVERAGES			2.77			3.68			3.36			2.83			3.08



PestSure Association General Liability 2012- First Quarter Occurrence Ratio History





**PESTSURE ASSOCIATION GENERAL/PRODUCTS LIABILITY
2012 - FIRST QUARTER OCCURRENCE RATIO HISTORY**

	2008 As of 03/31/2008			2009 As of 03/31/2009			2010 As of 03/31/2010			2011 As of 03/31/2011			2012 As of 03/31/2012		
	total techs	occ.	occ. ratio	total techs	occ.	occ. ratio	total techs	occ.	occ. ratio	total techs	occ.	occ. ratio	total techs	occ.	occ. ratio
A-ACTIVE	14	0	0.00	17	0	0.00	18	0	0.00	17	0	0.00	19	0	0.00
ABC PEST CONTROL - AUSTIN	180	0	0.00	160	0	0.00	160	0	0.00	185	0	0.00	185	0	0.00
ABC PEST CONTROL - DFW	65	0	0.00	59	0	0.00	60	0	0.00	76	0	0.00	76	0	0.00
ACME EXTERMINATING CORP	11	0	0.00	10	0	0.00	10	0	0.00	10	0	0.00	10	0	0.00
AIKEN PEST CONTROL, INC.	35	0	0.00	34	0	0.00	36	0	0.00	36	0	0.00	39	0	0.00
AL HOFFER'S PEST PROTECTION	15	0	0.00	12	0	0.00	12	0	0.00	12	0	0.00	12	0	0.00
ALABAMA PROFESSIONAL SERVICES													30	0	0.00
ALAMAR COMPANY	175	0	0.00	178	0	0.00	180	0	0.00	178	0	0.00	194	0	0.00
ALLGOOD SERVICES													209	0	0.00
AMERICAN PEST MANAGEMENT	45	0	0.00	48	0	0.00	54	0	0.00	61	0	0.00	72	0	0.00
ANTI-PEST CO INC	22	0	0.00	22	0	0.00	20	0	0.00	20	0	0.00	20	0	0.00
ANTI-PESTO BUG KILLERS	5	0	0.00	6	1	66.67	6	0	0.00	6	0	0.00	6	0	0.00
APEX PEST CONTROL	37	2	21.62	31	3	38.71	33	0	0.00	32	0	0.00	40	0	0.00
BILL CLARK PEST CONTROL	36	0	0.00	35	0	0.00	38	0	0.00	40	0	0.00	35	0	0.00
BIO-SERV CORP	120	0	0.00	120	0	0.00	112	0	0.00	145	0	0.00	152	0	0.00
BLACK PEST CONTROL, INC.	20	0	0.00	20	0	0.00	19	0	0.00	19	0	0.00	19	0	0.00
BRUCE TERMINIX	130	0	0.00	163	0	0.00	142	0	0.00	141	0	0.00	135	0	0.00
BUG BUSTERS INC	30	0	0.00	37	0	0.00	33	1	12.12	27	0	0.00	23	0	0.00
BUG OUT SERVICES										58	0	0.00	70	0	0.00
CHEMTEC PEST CONTROL	13	0	0.00	13	0	0.00	13	0	0.00	17	0	0.00	16	0	0.00
CLEGG'S TERMITE & PEST CONTROL	210	0	0.00	181	0	0.00	175	0	0.00	188	1	2.13	225	0	0.00
COOK'S PEST CONTROL	749	0	0.00	806	1	0.50	754	0	0.00	784	0	0.00	791	0	0.00
COOPER PEST CONTROL	34	0	0.00	37	0	0.00	40	0	0.00	43	0	0.00	51	0	0.00
COPELAN SERVICES, INC.	138	0	0.00	136	0	0.00	136	0	0.00	137	1	2.92	155	0	0.00
DEWEY SERVICES, INC.	375	0	0.00	360	0	0.00	320	0	0.00	322	0	0.00	371	0	0.00
DODSON BROS.	308	0	0.00	311	1	1.29	326	1	1.23	327	0	0.00	310	0	0.00
ECOLA SERVICES	33	0	0.00	21	0	0.00	49	0	0.00	28	1	14.29	33	0	0.00
EVINS PEST CONTROL	9	0	0.00	9	0	0.00	9	0	0.00	8	0	0.00	8	0	0.00
FLORIDA PEST CONTROL	388	1	1.03	533	0	0.00	347	0	0.00	348	0	0.00	348	0	0.00
FORSYTH, INC.													5	0	0.00
GREGORY TERMITE	91	0	0.00	100	0	0.00	100	0	0.00	100	0	0.00	100	0	0.00
GRIFFIN PEST CONTROL	28	0	0.00	32	0	0.00	34	0	0.00	36	0	0.00	45	0	0.00
GUARDIAN PEST													45	0	0.00
HULETT ENVIRONMENTAL SVCS	303	0	0.00	135	0	0.00	151	0	0.00	130	0	0.00	174	0	0.00
LLOYD PEST CONTROL	190	0	0.00	190	2	4.21	195	0	0.00	195	0	0.00	190	0	0.00
LOYAL TERMITE & PEST CONTROL	14	0	0.00	15	0	0.00	15	0	0.00	15	0	0.00	17	0	0.00
McCALL SERVICE	55	0	0.00	48	0	0.00	45	0	0.00	46	0	0.00	51	0	0.00
MCNEELY PEST CONTROL	18	0	0.00	18	0	0.00	22	0	0.00	25	0	0.00	38	0	0.00
MODERN EXTERMINATING (SC)	25	0	0.00	29	0	0.00	29	0	0.00	26	0	0.00	26	0	0.00
MYERS SERVICES	40	0	0.00	41	0	0.00	46	0	0.00	49	0	0.00	52	0	0.00
	24	0	0.00	24	0	0.00	24	0	0.00	23	0	0.00	24	0	0.00
NEW ENGLAND PEST CONTROL	24	0	0.00	29	0	0.00	25	1	16.00	26	0	0.00	29	0	0.00
NOZZLE NOLEN INC	55	0	0.00	50	0	0.00	48	0	0.00	45	0	0.00	45	0	0.00
OLSON DBA THE BUGMAN	22	0	0.00	23	0	0.00	21	1	19.05	19	0	0.00	34	0	0.00
PARAMOUNT PEST CONTROL	9	0	0.00	9	0	0.00	9	0	0.00	10	0	0.00	7	0	0.00
PERMA TREAT PEST & TERMITE CONTROL	67	0	0.00	35	0	0.00	35	0	0.00	75	0	0.00	77	0	0.00
PEST CONTROL TECHNICIANS	9	0	0.00	9	0	0.00	10	0	0.00	9	0	0.00	9	0	0.00
PEST FOG INC	22	0	0.00	20	0	0.00	19	0	0.00	21	0	0.00	23	0	0.00
PESTGUARD FUMIGATING	20	0	0.00	16	0	0.00	28	0	0.00	20	0	0.00	25	0	0.00



**PESTSURE ASSOCIATION GENERAL/PRODUCTS LIABILITY
2012 - FIRST QUARTER OCCURRENCE RATIO HISTORY**

	2008 As of 03/31/2008			2009 As of 03/31/2009			2010 As of 03/31/2010			2011 As of 03/31/2011			2012 As of 03/31/2012		
	<u>total</u> <u>techs</u>	<u>occ.</u>	<u>occ.</u> <u>ratio</u>	<u>total</u> <u>techs</u>	<u>occ.</u>	<u>occ.</u> <u>ratio</u>	<u>total</u> <u>techs</u>	<u>occ.</u>	<u>occ.</u> <u>ratio</u>	<u>total</u> <u>techs</u>	<u>occ.</u>	<u>occ.</u> <u>ratio</u>	<u>total</u> <u>techs</u>	<u>occ.</u>	<u>occ.</u> <u>ratio</u>
INSURED															
PESTMASTERS INC (VA)	15	0	0.00	14	0	0.00	13	0	0.00	13	0	0.00	14	0	0.00
RESIDEX													22	0	0.00
ROSE PEST SOLUTIONS				55	0	0.00	46	0	0.00	46	0	0.00	50	0	0.00
ROTTLER PEST & LAWN	60	0	0.00	51	0	0.00	58	0	0.00	61	0	0.00	60	0	0.00
SMITHEREEN EXTERMINATING CO	56	0	0.00	73	0	0.00	71	0	0.00	74	0	0.00	72	0	0.00
SPENCER PEST CONTROL				36	0	0.00	28	0	0.00	26	0	0.00	12	0	0.00
SPRINGER SERVICES	21	0	0.00	21	0	0.00	19	0	0.00	20	1	20.00	23	0	0.00
STANDARD EXTERMINATING	14	0	0.00	14	0	0.00	14	0	0.00	14	0	0.00	16	0	0.00
STEVE'S PEST CONTROL	9	0	0.00	11	0	0.00	12	0	0.00	12	0	0.00	12	0	0.00
TERMIMESH, LLC	6	0	0.00	15	1	26.67	15	0	0.00	12	1	33.33	16	0	0.00
TERMINIX SERVICES	825	2	0.97	850	1	0.47	860	0	0.00	907	0	0.00	900	0	0.00
THOMAS PEST SERVICE													3	0	0.00
TOMASELLO INC	24	0	0.00	23	0	0.00	22	0	0.00	22	0	0.00	21	0	0.00
UNIVERSITY TERMITE & PEST	20	0	0.00	15	0	0.00	13	0	0.00	12	0	0.00	13	0	0.00
VENTURA PEST CONTROL	23	0	0.00	23	0	0.00	24	0	0.00	22	0	0.00	24	0	0.00
VIKING TERMITE & PEST CONTROL	70	0	0.00	72	0	0.00	76	0	0.00	83	0	0.00	80	0	0.00
W. B. MCCLOUD & COMPANY INC.	125	1	3.20	110	0	0.00	97	1	4.12	102	0	0.00	105	0	0.00
W. B. SPRAGUE CO INC	40	0	0.00	89	0	0.00	41	1	9.76	90	0	0.00	113	0	0.00
WAYNE'S ENVIRONMENTAL SVCS.	35	0	0.00	46	0	0.00	45	0	0.00	51	0	0.00	43	0	0.00
PestSure 2012 YTD Average															0.39
ARROW EXTERMINATORS	494	0	0.00	550	0	0.00	468	0	0.00	503	0	0.00	537	2	1.49
ANDERSON PEST SOLUTIONS	100	1	4.00	102	0	0.00	108	1	3.70	102	0	0.00	127	1	3.15
ABC PEST CONTROL - HOUSTON	96	0	0.00	89	0	0.00	89	0	0.00	78	0	0.00	78	1	5.13
BLISS EXTERMINATOR CO	44	0	0.00	40	0	0.00	39	0	0.00	32	1	12.50	34	1	11.76
THE GENERAL PEST CONTROL	22	0	0.00	22	0	0.00	24	0	0.00	24	0	0.00	25	1	16.00
REDD-GULFPORT	21	0	0.00	18	0	0.00	17	0	0.00	22	0	0.00	21	1	19.05
CRAIG THOMAS PEST CONTROL	14	0	0.00	15	0	0.00	20	0	0.00	24	0	0.00			
MODERN PEST SERVICES (ME)	62	0	0.00	80	0	0.00	62	0	0.00	99	0	0.00			
YOUR WAY FUMIGATION INC	70	0	0.00	63	0	0.00	65	1	6.15	61	0	0.00			
TOTALS	6479	7		6679	10		6304	8		6647	6		7091	7	
AVERAGES			0.43			0.60			0.51			0.36			0.39