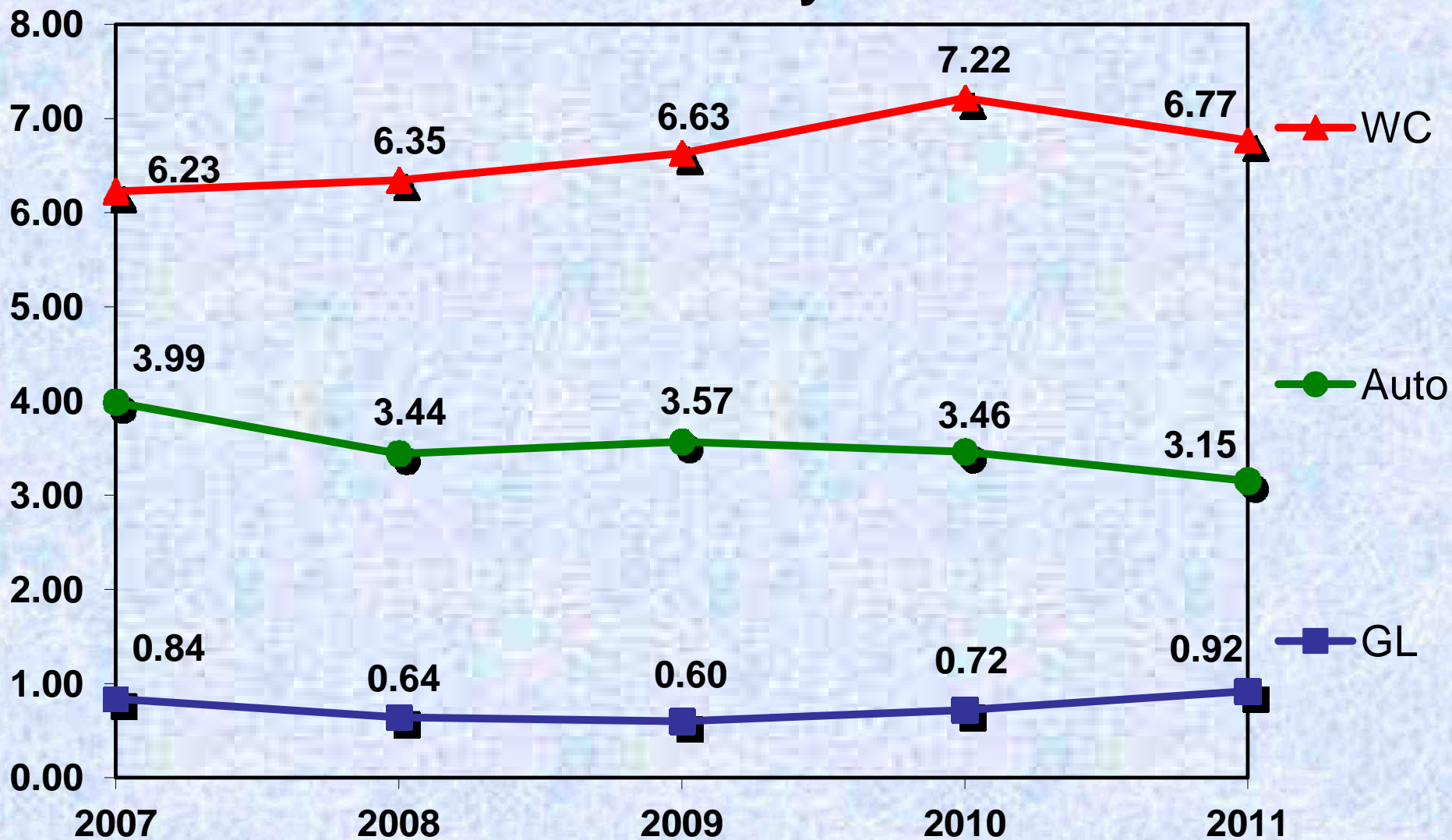


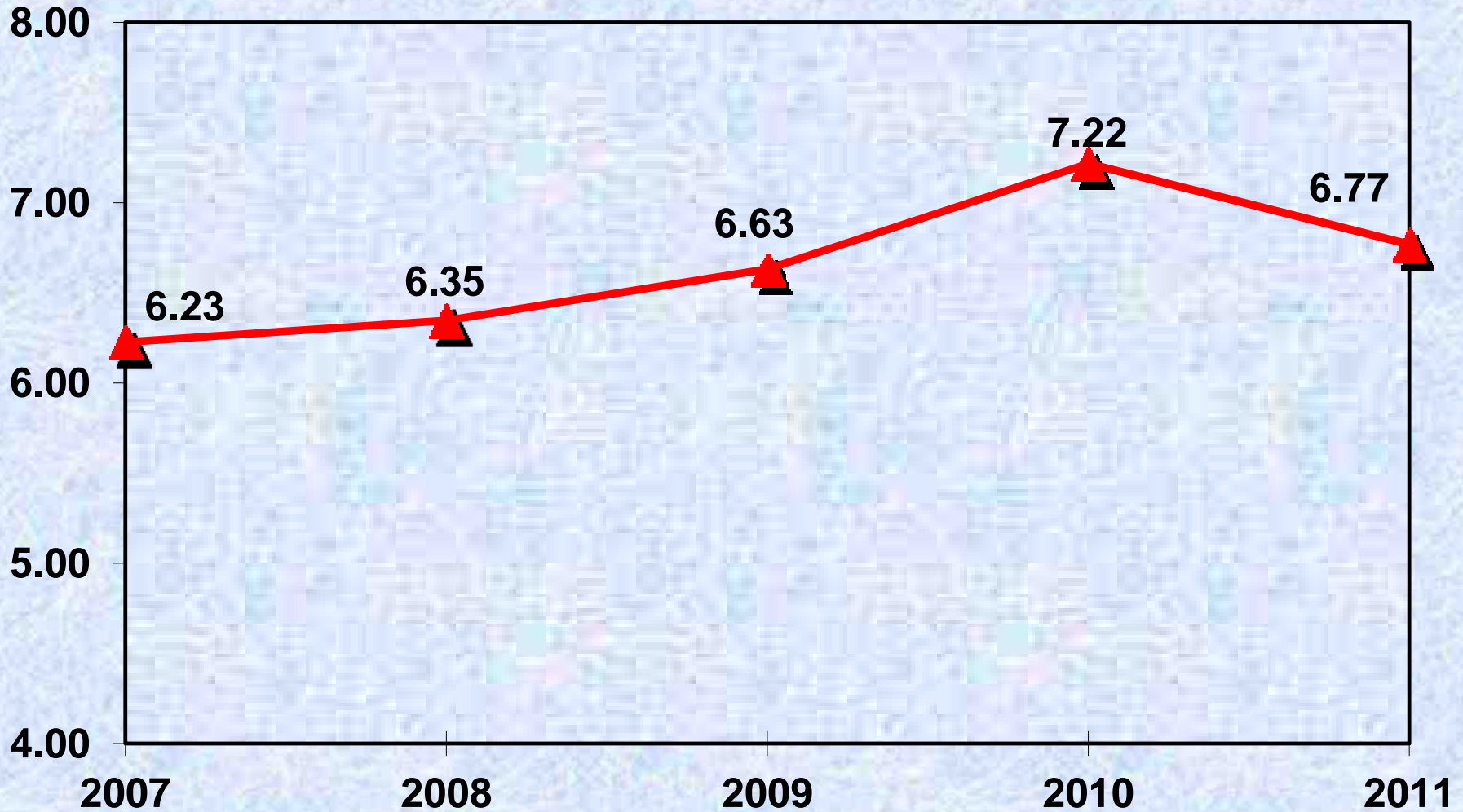


PestSure Association 2011 Occurrence Ratio History as of 12/31





PestSure Association Workers' Compensation 2011 - Fourth Quarter Occurrence Ratio History





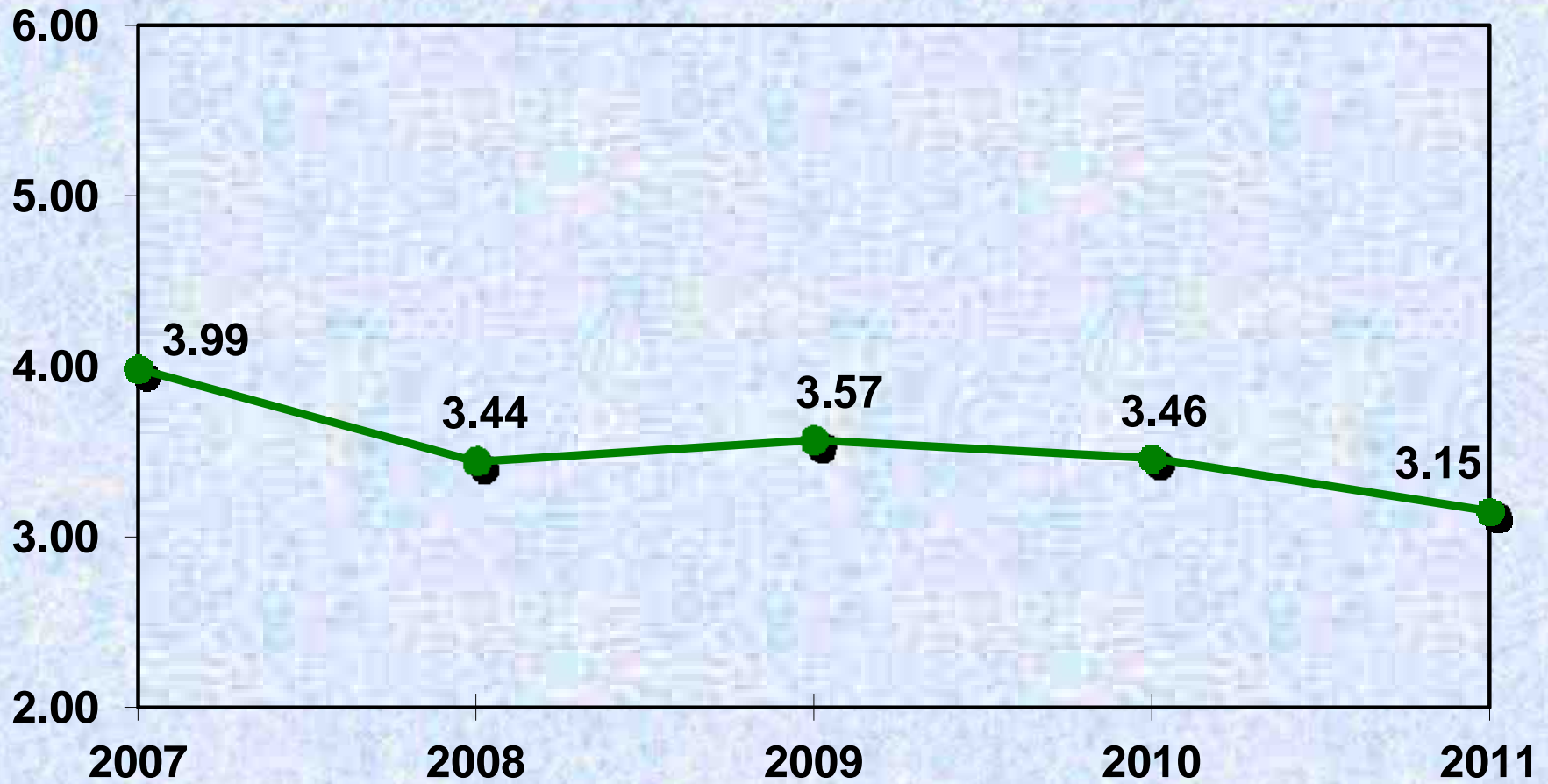
**PESTSURE ASSOCIATION WORKERS' COMPENSATION
2011 - FOURTH QUARTER OCCURRENCE RATIO HISTORY**

	2007 As of 12/31/2007			2008 As of 12/31/2008			2009 As of 12/31/2010			2010 As of 12/31/2010			2011 As of 12/31/2011		
	total emp.	occ.	occ. ratio	total emp.	occ.	occ. ratio	total emp.	occ.	occ. ratio	total emp.	occ.	occ. ratio	total emp.	occ.	occ. ratio
INSURED															
A-ACTIVE TERMITE & PEST CONTROL	38	0	0.00	38	0	0.00	40	1	2.50	32	1	3.13	39	0	0.00
ACME EXTERMINATING CO.	18	1	5.56	18	1	5.56	17	0	0.00	17	0	0.00	17	0	0.00
AL HOFFER'S PEST PROTECTION	33	6	18.18	30	1	3.33	22	1	4.55	22	0	0.00	22	0	0.00
ANTI-PEST CO INC	31	0	0.00	33	1	3.03	26	2	7.69	25	1	4.00	25	0	0.00
ANTI-PESTO BUG KILLERS	14	0	0.00	12	1	8.33	12	2	16.67	12	3	25.00	12	0	0.00
CHEMTEC PEST CONTROL	20	1	5.00	22	0	0.00	22	0	0.00	22	1	4.55	26	0	0.00
EVINS PEST CONTROL	16	3	18.75	16	0	0.00	14	0	0.00	14	3	21.43	14	0	0.00
PEST FOG INC	33	1	3.03	30	1	3.33	30	0	0.00	34	1	2.94	36	0	0.00
PESTMASTERS, INC.	25	0	0.00	22	0	0.00	21	1	4.76	23	0	0.00	23	0	0.00
SPRINGER SERVICES	44	1	2.27	40	0	0.00	36	1	2.78	36	1	2.78	42	0	0.00
VIKING TERMITE & PEST CONTROL	N/A	N/A	#VALUE!	N/A	N/A	#VALUE!	N/A	N/A	#VALUE!	2	1	50.00	1	0	0.00
SMITHEREEN EXTERMINATING CO	94	2	2.13	113	3	2.65	120	7	5.83	121	5	4.13	121	1	0.83
ROTTLER PEST & LAWN	105	1	0.95	105	1	0.95	99	1	1.01	100	1	1.00	100	1	1.00
RESIDEX LLC	68	3	4.41	66	1	1.52	61	3	4.92	65	0	0.00	120	2	1.67
OLSON DBA THE BUGMAN	35	3	8.57	37	2	5.41	43	2	4.65	41	2	4.88	55	1	1.82
ECOLA SERVICES, INC	N/A	N/A	#VALUE!	N/A	N/A	#VALUE!	N/A	N/A	#VALUE!	N/A	N/A	#VALUE!	51	1	1.96
SPENCER PEST CONTROL	N/A	N/A	#VALUE!	N/A	N/A	#VALUE!	62	6	9.68	47	6	12.77	50	1	2.00
DODSON BROS.	503	17	3.38	525	21	4.00	520	18	3.46	524	25	4.77	524	11	2.10
MCNEELY PEST CONTROL	N/A	0	#VALUE!	N/A	N/A	#VALUE!	30	2	6.67	34	4	11.76	47	1	2.13
APEX PEST CONTROL	84	1	1.19	60	5	8.33	59	2	3.39	60	4	6.67	70	2	2.86
ABC PEST CONTROL - DFW	94	0	0.00	90	0	0.00	95	1	1.05	100	3	3.00	103	3	2.91
VENTURA PEST CONTROL	41	0	0.00	38	1	2.63	33	3	9.09	33	1	3.03	30	1	3.33
ABC PEST CONTROL - HOUSTON	157	2	1.27	153	8	5.23	164	9	5.49	165	6	3.64	164	6	3.66
COOPER PEST CONTROL	62	6	9.68	64	3	4.69	67	4	5.97	79	4	5.06	79	3	3.80
STANDARD EXTERMINATING	21	1	4.76	21	1	4.76	20	0	0.00	20	0	0.00	23	1	4.35
DEWEY SERVICES, INC.	553	23	4.16	534	18	3.37	527	27	5.12	527	19	3.61	512	23	4.49
W.B. MCCLOUD & CO. INC	190	8	4.21	194	19	9.79	160	7	4.38	160	11	6.88	165	8	4.85
COPELAN SERVICES, INC.	259	18	6.95	256	17	6.64	247	7	2.83	247	20	8.10	243	12	4.94
MYERS SERVICES	90	9	10.00	91	5	5.49	89	4	4.49	88	4	4.55	81	4	4.94
STEVE'S PEST CONTROL	13	0	0.00	16	0	0.00	17	0	0.00	20	0	0.00	20	1	5.00
ANDERSON PEST CONTROL	172	9	5.23	174	20	11.49	190	14	7.37	190	17	8.95	194	10	5.15
REDD-GULFPORT	35	2	5.71	34	1	2.94	34	3	8.82	34	1	2.94	38	2	5.26
BIO-SERV CORP	203	10	4.93	200	3	1.50	186	12	6.45	186	11	5.91	189	10	5.29
MODERN EXTERMINATING (SC)	40	2	5.00	43	2	4.65	40	2	5.00	37	2	5.41	37	2	5.41
BLISS EXTERMINATORS	71	10	14.08	65	6	9.23	55	0	0.00	55	3	5.45	51	3	5.88
PEST CONTROL TECHNICIANS	20	1	5.00	16	0	0.00	17	0	0.00	17	0	0.00	16	1	6.25
W.B. SPRAGUE INC	55	7	12.73	57	3	5.26	57	2	3.51	57	2	3.51	61	4	6.56
PestSure 2011 YTD Average															6.77
AMERICAN PEST MANAGEMENT	65	4	6.15	70	3	4.29	76	6	7.89	98	4	4.08	118	8	6.78
BILL CLARK PEST CONTROL, INC.	44	0	0.00	50	3	6.00	53	0	0.00	53	1	1.89	54	4	7.41
LLOYD PEST CONTROL	260	28	10.77	261	22	8.43	250	26	10.40	250	18	7.20	250	19	7.60
MASSEY SERVICES	762	54	7.09	776	52	6.70	776	51	6.57	770	47	6.10	1289	98	7.60
LOYAL TERMITE & PEST CONTROL	31	3	9.68	32	1	3.13	32	2	6.25	33	3	9.09	36	3	8.33
BUG BUSTERS INC	61	3	4.92	59	1	1.69	41	0	0.00	42	0	0.00	44	4	9.09
ARROW EXTERMINATORS	945	74	7.83	1000	89	8.90	950	82	8.63	979	84	8.58	954	87	9.12
COOK'S PEST CONTROL	1210	98	8.10	1291	122	9.45	1322	127	9.61	1351	136	10.07	1377	132	9.59
MODERN PEST SERVICES (ME)	125	10	8.00	127	11	8.66	130	7	5.38	130	21	16.15	150	15	10.00
TERMIMESH LLC	10	1	10.00	16	0	0.00	28	1	3.57	28	2	7.14	20	2	10.00
ABC PEST CONTROL - AUSTIN	359	27	7.52	373	24	6.43	375	33	8.80	370	48	12.97	424	47	11.08
GRIFFIN PEST CONTROL	67	2	2.99	67	0	0.00	85	4	4.71	85	5	5.88	89	10	11.24
BRUCE TERMINIX CO INC	180	6	3.33	213	6	2.82	204	18	8.82	200	19	9.50	199	25	12.56
TOTALS	7356	458		7548	479		7554	501		7635	551		8405	569	
AVERAGES			6.23			6.35			6.63			7.22			6.77

NEW INSURED IN BOLD



PestSure Association Auto Liability 2011 - Fourth Quarter Occurrence Ratio History



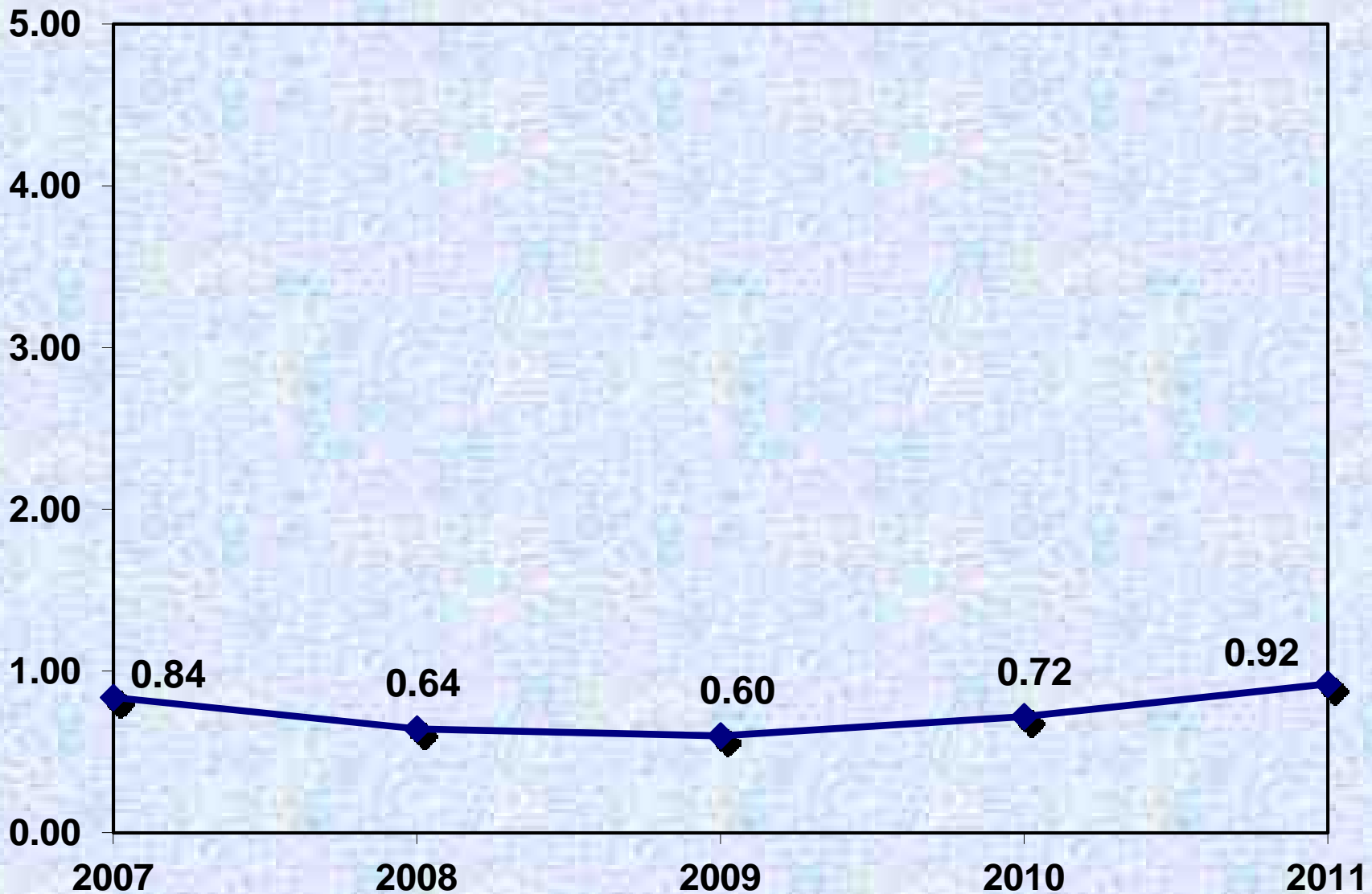


**PESTSURE ASSOCIATION AUTO LIABILITY
2011 - FOURTH QUARTER OCCURRENCE RATIO HISTORY**

INSURED	2007 As of 12/31/2007			2008 As of 12/31/2008			2009 As of 12/31/2009			2010 As of 12/31/2010			2011 As of 12/31/2011		
	total veh.	occ.	occ. ratio	total veh.	occ.	occ. ratio	total veh.	occ.	occ. ratio	total veh.	occ.	occ. ratio	total veh.	occ.	occ. ratio
A-ACTIVE TERMITE & PEST CONTROL	27	2	7.41	29	2	6.90	26	0	0.00	24	0	0.00	26	0	0.00
AL HOFFER'S PEST PROTECTION	30	3	10.00	26	0	0.00	23	0	0.00	23	0	0.00	22	0	0.00
ANTI-PEST CO INC	31	0	0.00	32	2	6.25	30	1	3.33	30	0	0.00	30	0	0.00
ANTI-PESTO BUG KILLERS	13	2	15.38	13	0	0.00	12	0	0.00	12	3	25.00	13	0	0.00
BILL CLARK PEST CONTROL INC	48	2	4.17	49	1	2.04	50	1	2.00	50	0	0.00	52	0	0.00
BLACK PEST CONTROL, INC.	36	0	0.00	38	1	2.63	35	0	0.00	38	0	0.00	35	0	0.00
COOPER PEST CONTROL	48	1	2.08	48	1	2.08	51	2	3.92	67	1	1.49	57	0	0.00
EVINS PEST CONTROL	12	1	8.33	13	1	7.69	14	1	7.14	15	0	0.00	14	0	0.00
McCALL SERVICE	105	2	1.90	109	4	3.67	90	4	4.44	96	1	1.04	92	0	0.00
NATIONAL BUGMOBILES, INC.	38	1	2.63	39	0	0.00	36	0	0.00	34	2	5.88	33	0	0.00
OLSON DBA THE BUGMAN	32	1	3.13	31	2	6.45	31	2	6.45	33	1	3.03	40	0	0.00
PARAMOUNT PEST CONTROL	11	1	9.09	10	0	0.00	8	0	0.00	12	1	8.33	11	0	0.00
PEST CONTROL TECHNICIANS	11	1	9.09	11	2	18.18	11	1	9.09	10	1	10.00	10	0	0.00
PEST FOG, INC	28	0	0.00	27	1	3.70	26	2	7.69	24	0	0.00	26	0	0.00
ROTTLER PEST & LAWN	89	2	2.25	86	1	1.16	82	0	0.00	93	0	0.00	95	0	0.00
STANDARD EXTERMINATING	5	0	0.00	5	1	20.00	6	0	0.00	6	2	33.33	7	0	0.00
TERMIMESH, LLC	N/A	N/A	#VALUE!	14	0	0.00	25	1	4.00	26	3	11.54	19	0	0.00
TOMASELLO	32	2	6.25	30	0	0.00	31	1	3.23	31	1	3.23	28	0	0.00
YOUR WAY FUMIGATION INC.	53	4	7.55	55	1	1.82	57	3	5.26	56	2	3.57	53	0	0.00
BIO-SERV CORP	229	8	3.49	239	4	1.67	230	5	2.17	230	2	0.87	242	2	0.83
ALAMAR COMPANY	209	6	2.87	223	8	3.59	232	5	2.16	232	8	3.45	237	3	1.27
ABC PEST CONTROL - AUSTIN	270	11	4.07	297	10	3.37	308	13	4.22	325	10	3.08	348	5	1.44
GRIFFIN PEST CONTROL	52	1	1.92	57	0	0.00	63	0	0.00	58	2	3.45	67	1	1.49
W.B. SPRAGUE	116	3	2.59	127	3	2.36	129	3	2.33	129	1	0.78	134	2	1.49
NEW ENGLAND PEST CONTROL	68	3	4.41	67	1	1.49	66	0	0.00	60	1	1.67	65	1	1.54
BUT OUT SERVICE, INC	N/A	N/A	#VALUE!	N/A	N/A	#VALUE!	N/A	N/A	#VALUE!	N/A	N/A	#VALUE!	109	2	1.83
RESIDEX LLC	33	1	3.03	32	2	6.25	31	1	3.23	33	2	6.06	52	1	1.92
DODSON BROS.	583	28	4.80	612	30	4.90	621	17	2.74	621	14	2.25	616	12	1.95
BRUCE TERMINIX CO INC	181	9	4.97	193	6	3.11	190	6	3.16	187	2	1.07	187	4	2.14
ANDERSON PEST CONTROL	171	8	4.68	175	9	5.14	178	7	3.93	178	8	4.49	181	4	2.21
REDD-GULFPORT	44	1	2.27	39	1	2.56	37	0	0.00	43	1	2.33	43	1	2.33
BUG BUSTERS INC	62	2	3.23	50	2	4.00	49	1	2.04	44	0	0.00	41	1	2.44
NOZZLE NOLEN INC	95	2	2.11	91	2	2.20	81	0	0.00	80	0	0.00	80	2	2.50
DEWEY SERVICES, INC.	616	11	1.79	590	16	2.71	535	12	2.24	482	8	1.66	503	13	2.58
MODERN PEST SERVICES (ME)	119	4	3.36	118	2	1.69	113	2	1.77	125	3	2.40	154	4	2.60
MYERS SERVICES	68	9	13.24	69	5	7.25	71	3	4.23	71	0	0.00	71	2	2.82
LLOYD PEST CONTROL	245	5	2.04	252	8	3.17	227	12	5.29	245	7	2.86	245	7	2.86
APEX PEST CONTROL	60	3	5.00	57	0	0.00	54	1	1.85	55	1	1.82	68	2	2.94
SMITHEREEN EXTERMINATING CO.	82	3	3.66	90	3	3.33	100	4	4.00	103	3	2.91	102	3	2.94
HULETT ENVIRONMENTAL SVCS.	235	7	2.98	240	4	1.67	243	5	2.06	261	5	1.92	271	8	2.95
TERMINIX SERVICES	942	39	4.14	984	48	4.88	1078	35	3.25	1078	36	3.34	1083	33	3.05
PestSure 2011 YTD Average															3.15
VENTURA PEST CONTROL	34	1	2.94	34	0	0.00	31	1	3.23	31	1	3.23	30	1	3.33
W.B. MCCLLOUD	170	9	5.29	175	5	2.86	166	1	0.60	166	6	3.61	174	6	3.45
COOK'S PEST CONTROL	1202	46	3.83	1276	42	3.29	1330	58	4.36	1317	41	3.11	1326	46	3.47
MASSEY SERVICES	619	31	5.01	676	21	3.11	678	30	4.42	1067	48	4.50	1040	39	3.75
ECOLA SERVICES INC	41	1	2.44	41	1	2.44	42	1	2.38	47	0	0.00	48	2	4.17
COPESAN SERVICES, INC.	198	7	3.54	194	5	2.58	195	6	3.08	195	8	4.10	190	8	4.21
ABC PEST CONTROL - DFW	77	7	9.09	80	8	10.00	90	4	4.44	91	7	7.69	91	4	4.40
CHEMTEC PEST CONTROL	18	0	0.00	19	1	5.26	21	1	4.76	21	3	14.29	21	1	4.76
MCNEELY PEST CONTROL, INC.	21	0	0.00	25	0	0.00	26	0	0.00	29	3	10.34	37	2	5.41
STEVE'S PEST CONTROL	12	1	8.33	14	0	0.00	15	0	0.00	17	1	5.88	18	1	5.56
ABC PEST CONTROL - HOUSTON	116	13	11.21	144	11	7.64	144	11	7.64	103	5	4.85	142	8	5.63
GREGORY TERMITE & PEST CONTROL	109	5	4.59	117	8	6.84	121	4	3.31	128	5	3.91	130	8	6.15
ROSE PEST SOLUTIONS	N/A	N/A	#VALUE!	71	0	0.00	69	7	10.14	72	3	4.17	79	5	6.33
MODERN EXTERMINATING (SC)	33	1	3.03	34	1	2.94	33	0	0.00	31	1	3.23	31	2	6.45
ARROW EXTERMINATORS	N/A	N/A	#VALUE!	750	21	2.80	796	48	6.03	822	62	7.54	789	51	6.46
PESTGUARD FUMIGATING	24	0	0.00	34	0	0.00	17	0	0.00	17	2	11.76	22	2	9.09
AMERICAN PEST	N/A	N/A	#VALUE!	N/A	N/A	#VALUE!	N/A	N/A	#VALUE!	N/A	N/A	#VALUE!	77	10	12.99
TOTALS	7803	311		8951	308		9054	323		9474	328		9807	309	
AVERAGES		3.99			3.44			3.57			3.46			3.15	



PestSure Association General Liability 2011 - Fourth Quarter Occurrence Ratio History





**PESTSURE ASSOCIATION GENERAL/PRODUCTS LIABILITY
2011 - FOURTH QUARTER OCCURRENCE RATIO HISTORY**

	2007			2008			2009			2010			2011		
	As of 12/31/2007			As of 12/31/2008			As of 12/31/2009			As of 12/31/2010			As of 12/31/2011		
	total techs	occ.	occ. ratio	total techs	occ.	occ. ratio	total techs	occ.	occ. ratio	total techs	occ.	occ. ratio	total techs	occ.	occ. ratio
INSURED															
A-ACTIVE TERMITE & PEST CONTROL	14	0	0.00	17	0	0.00	18	0	0.00	17	0	0.00	19	0	0.00
ABC PEST CONTROL - DFW	65	0	0.00	55	0	0.00	59	0	0.00	60	0	0.00	76	0	0.00
ABC PEST CONTROL - HOUSTON	131	1	0.76	96	0	0.00	89	0	0.00	89	0	0.00	78	0	0.00
ACME EXTERMINATING CORP	11	0	0.00	11	0	0.00	10	0	0.00	10	0	0.00	10	0	0.00
AIKEN PEST CONTROL, INC.	N/A	N/A	#VALUE!	35	1	2.86	36	0	0.00	36	0	0.00	39	0	0.00
ALABAMA PROFESSIONAL SERVICES	N/A	N/A	#VALUE!	N/A	N/A	#VALUE!	N/A	N/A	#VALUE!	N/A	N/A	#VALUE!	30	0	0.00
AL HOFFER'S PEST PROTECTION	15	0	0.00	12	0	0.00	12	0	0.00	12	1	8.33	12	0	0.00
ALAMAR COMPANY INC	149	1	0.67	175	1	0.57	180	0	0.00	178	0	0.00	194	0	0.00
AMERICAN PEST MANAGEMENT	37	0	0.00	45	0	0.00	54	1	1.85	61	0	0.00	61	0	0.00
ANTI-PEST CO INC	23	0	0.00	22	1	4.55	20	0	0.00	20	0	0.00	20	0	0.00
ANTI-PESTO BUG KILLERS	8	0	0.00	5	0	0.00	6	1	16.67	6	0	0.00	6	0	0.00
BILL CLARK PEST CONTROL INC	30	0	0.00	36	0	0.00	38	0	0.00	38	0	0.00	40	0	0.00
BUG BUSTERS	30	0	0.00	37	0	0.00	33	0	0.00	27	1	3.70	23	0	0.00
CHEMTEC PEST CONTROL	11	0	0.00	13	0	0.00	13	0	0.00	13	0	0.00	17	0	0.00
COOPER PEST CONTROL	34	0	0.00	38	1	2.63	37	0	0.00	43	1	2.33	43	0	0.00
CRAIG THOMAS PEST CONTROL	13	0	0.00	14	1	7.14	20	0	0.00	24	0	0.00	20	0	0.00
FLORIDA PEST CONTROL	420	0	0.00	388	3	0.77	347	0	0.00	347	1	0.29	348	0	0.00
GRIFFIN PEST CONTROL	30	1	3.33	28	0	0.00	34	1	2.94	36	0	0.00	36	0	0.00
LOYAL TERMITE & PEST CONTROL	14	0	0.00	15	0	0.00	15	0	0.00	15	0	0.00	17	0	0.00
McCALL SERVICE	55	2	3.64	48	0	0.00	45	0	0.00	46	0	0.00	51	0	0.00
MODERN PEST SERVICES (ME)	65	1	1.54	80	1	1.25	62	0	0.00	99	0	0.00	82	0	0.00
MYERS SERVICES	40	0	0.00	41	0	0.00	46	0	0.00	49	0	0.00	52	0	0.00
NATIONAL BUGMOBILES, INC.	24	0	0.00	24	0	0.00	24	0	0.00	23	0	0.00	24	0	0.00
NOZZLE NOLEN INC	53	1	1.89	55	0	0.00	48	0	0.00	48	0	0.00	45	0	0.00
OLSON DBA THE BUGMAN	22	0	0.00	23	0	0.00	21	0	0.00	19	1	5.26	34	0	0.00
PARAMOUNT PEST CONTROL	9	0	0.00	8	0	0.00	9	0	0.00	9	0	0.00	10	0	0.00
PEST CONTROL TECHNICIANS	9	0	0.00	9	0	0.00	10	0	0.00	9	0	0.00	9	0	0.00
PEST FOG INC	22	0	0.00	20	0	0.00	19	0	0.00	21	0	0.00	23	0	0.00
PESTGUARD FUMIGATING	35	0	0.00	20	0	0.00	28	0	0.00	28	0	0.00	20	0	0.00
PESTMASTERS, INC.	15	0	0.00	14	0	0.00	13	0	0.00	13	1	7.69	14	0	0.00
RESIDEX, LLC	N/A	N/A	#VALUE!	N/A	N/A	#VALUE!	22	1	4.55	22	0	0.00	22	0	0.00
ROSE PEST SOLUTIONS	N/A	N/A	#VALUE!	55	0	0.00	46	0	0.00	46	1	2.17	50	0	0.00
ROTTLER PEST & LAWN	60	0	0.00	51	0	0.00	58	0	0.00	61	1	1.64	60	0	0.00
SMITHEREEN EXTERMINATING CO.	56	0	0.00	68	0	0.00	73	0	0.00	71	0	0.00	74	0	0.00
STANDARD EXTERMINATING	14	0	0.00	14	0	0.00	14	0	0.00	14	0	0.00	14	0	0.00
STEVE'S PEST CONTROL	9	0	0.00	11	0	0.00	11	0	0.00	12	0	0.00	12	0	0.00
THE GENERAL PEST CONTROL CO.	N/A	N/A	#VALUE!	22	0	0.00	24	0	0.00	24	0	0.00	24	0	0.00
UNIVERSITY TERMITE & PEST CONTROL	20	0	0.00	20	0	0.00	13	0	0.00	12	0	0.00	12	0	0.00
VENTURA PEST CONTROL	34	1	2.94	23	0	0.00	24	0	0.00	22	0	0.00	24	0	0.00
W. B. MCCLOUD	117	0	0.00	125	1	0.80	97	2	2.06	97	1	1.03	102	0	0.00
W. B. SPRAGUE CO. INC	38	0	0.00	89	0	0.00	41	0	0.00	41	1	2.44	113	0	0.00
WAYNE'S ENVIRONMENTAL SVCS.	42	0	0.00	35	1	2.86	45	0	0.00	45	0	0.00	45	0	0.00
COOK'S PEST CONTROL	749	0	0.00	806	1	0.12	754	3	0.40	784	1	0.13	791	3	0.38
ALLGOOD SERVICES	N/A	N/A	#VALUE!	N/A	N/A	#VALUE!	N/A	N/A	#VALUE!	N/A	N/A	#VALUE!	209	1	0.48
ARROW EXTERMINATORS	494	3	0.61	550	1	0.18	468	0	0.00	503	2	0.40	379	2	0.53
CLEGG'S TERMITE & PEST CONTROL	160	2	1.25	271	0	0.00	175	0	0.00	188	1	0.53	188	1	0.53
ABC PEST CONTROL - AUSTIN	180	1	0.56	270	0	0.00	160	0	0.00	160	0	0.00	185	1	0.54
HULETT ENVIRONMENTAL SVCS.	303	0	0.00	135	0	0.00	151	0	0.00	130	0	0.00	174	1	0.57
TERMINIX SERVICES	675	4	0.59	825	3	0.36	860	5	0.58	907	3	0.33	907	7	0.77
DEWEY SERVICES, INC.	375	4	1.07	360	1	0.28	320	0	0.00	322	0	0.00	371	3	0.81
PestSure 2011 YTD Average															0.92
ANDERSON PEST CONTROL	95	0	0.00	100	1	1.00	108	0	0.00	108	2	1.85	102	1	0.98
DODSON BROS.	296	5	1.69	311	5	1.61	326	1	0.31	326	2	0.61	327	4	1.22
PERMA TREAT PEST & TERMITE	67	0	0.00	35	0	0.00	35	0	0.00	75	0	0.00	77	1	1.30
BIO-SERV CORP	135	0	0.00	120	1	0.83	112	0	0.00	141	0	0.00	145	2	1.38
COPELAN SERVICES, INC.	142	6	4.23	138	3	2.17	136	1	0.74	137	3	2.19	137	2	1.46
BRUCE TERMINIX	130	0	0.00	163	0	0.00	142	0	0.00	141	0	0.00	135	2	1.48
LLOYD PEST CONTROL	185	2	1.08	190	6	3.16	195	4	2.05	195	0	0.00	195	3	1.54
YOUR WAY FUMIGATION	N/A	N/A	#VALUE!	70	0	0.00	65	0	0.00	65	3	4.62	61	1	1.64
BUG OUT SERVICE	N/A	N/A	#VALUE!	N/A	N/A	#VALUE!	N/A	N/A	#VALUE!	N/A	N/A	#VALUE!	58	1	1.72
GREGORY PEST CONTROL	91	1	1.10	98	0	0.00	100	2	2.00	100	2	2.00	100	2	2.00
VIKING TERMITE & PEST CONTROL	70	0	0.00	72	0	0.00	76	2	2.63	83	0	0.00	80	2	2.50
ECOLA SERVICES, INC.	33	2	6.06	21	0	0.00	49	0	0.00	28	3	10.71	33	1	3.03
MODERN EXTERMINATING (SC)	25	2	8.00	29	0	0.00	29	1	3.45	26	1	3.85	26	1	3.85
REDD-GULFPORT	22	0	0.00	21	0	0.00	17	0	0.00	17	1	5.88	22	1	4.55
MCNEELY PEST CONTROL	17	0	0.00	18	2	11.11	22	0	0.00	25	0	0.00	38	2	5.26
BLISS PEST PROTECTION, LLC	51	0	0.00	44	0	0.00	39	1	2.56	39	0	0.00	34	2	5.88
APEX PEST CONTROL	37	5	13.51	31	5	16.13	33	4	12.12	32	2	6.25	40	3	7.50
TERMIMESH, LLC	N/A	N/A	#VALUE!	10	0	0.00	15	1	6.67	15	0	0.00	12	1	8.33
TOMASELLO INC	24	0	0.00	24	1	4.17	22	0	0.00	22	0	0.00	22	2	9.09
SPRINGER SERVICES, INC	24	4	16.67	21	0	0.00	19	0	0.00	19	3	15.79	20	2	10.00
NEW ENGLAND PEST CONTROL	25	3	12.00	29	1	3.45	25	0	0.00	26	1	3.85	29	3	10.34
BLACK PEST CONTROL, INC.	20	0	0.00	20	1	5.00	19	1	5.26	19	2	10.53	19	2	10.53
SPENCER PEST CONTROL	N/A	N/A	#VALUE!	N/A	N/A	#VALUE!	36	4	11.11	28	5	17.86	26	3	11.54
EVINS PEST CONTROL	10	0	0.00	9	0	0.00	9	2	22.22	8	0	0.00	8	1	12.50
TOTALS	6209	52		6688	43		6331	38		6532	47		6955	64	
AVERAGES			0.84			0.64			0.60			0.72			0.92