

PestSure Safety

INSURING THE FUTURE OF PEST CONTROL

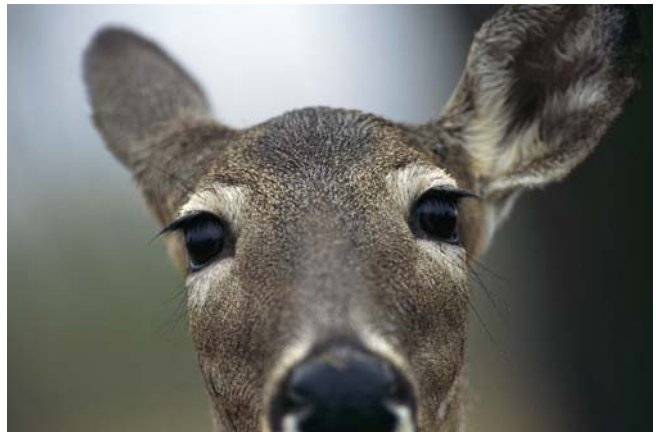
Tips

A five-minute training Series for Pest Management Professionals.

Deer Season

Late fall is the most dangerous season for deer-vehicle crashes. Deer migrate and breed in fall and this increases the number of collisions because deer movement is more frequent. Remember these tips as you travel the roadways in your territory this late autumn.

- Deer are the most active during dawn and dusk.
- If you see one deer, assume there are more and slow down and cover your brake to study the roadside.
- Always wear a seat belt to prevent injuries when you need to take evasive action or should you collide with a deer. Remember, your seat belt keeps you behind the wheel and better able to control your vehicle.
- When you spot a deer, slow down and blast your horn in one long blast. If it is safe to do so, stop and let the deer cross. Remember, foot to brake, eyes to mirror.
- If a deer leaps into your driving path and surprises you, brake firmly and come to a controlled stop.
- It is always safer to strike the animal than to lose control of your vehicle or to risk a swerve into oncoming traffic.
- Remember to watch for other vehicles that might swerve into your path to avoid a collision with a deer.
- Should you drop a wheel off the shoulder of the road when taking evasive action to avoid the deer, stop your vehicle before coming back onto the roadway. Trying to correct the drop while still rolling will cause you to cross to the oncoming lane or lose control of your vehicle.



Use these tips to avoid collisions with deer or other animals that may unexpectedly enter your path of travel.